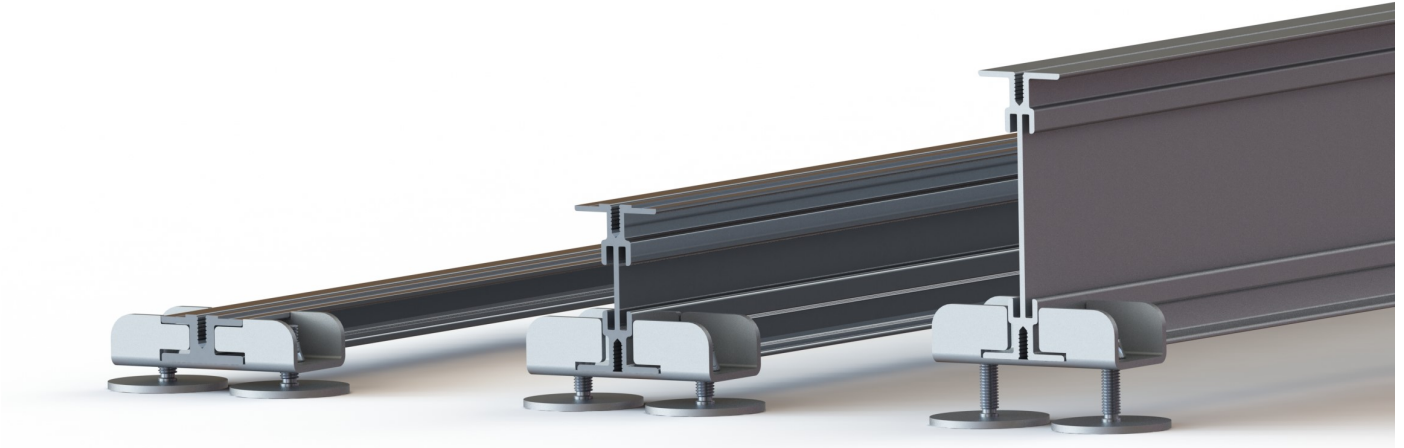


ALUMINIUM DECKING



by MEXTRU



Mextru are a leading manufacturer of aluminium decking. Our system being of all aluminium construction is fire resistant, very competitive, and has several unique features, including the best non-slip surface on the market, with virtually no maintenance required.

The Mextru aluminium decking range is further complimented by the Mextru adjustable pedestal. The patented pedestal is designed for use on inclines of up to 5 degrees, without the need for additional slope compensators.

The pedestal is incredibly easy to adjust and can be slid along the beam to the desired position. The ease of installation and adjustment makes the Mextru pedestal a natural choice for the time conscious installer.

The Mextru pedestal is designed to work exclusively with the Mextru support joists. The following table defines the joist and pedestal combinations to achieve the desired buildup to the top surface of the joist structure.



Build up including beam (excluding deck boards)	Joist	Pedestal
128mm—165mm	120mm	PED50
105mm—128mm	100mm	PED50
79mm—105mm	70mm	PED50
59mm—78mm	50mm	PED50
41mm—58mm	20mm	PED20XR
28mm—40mm	20mm	PED20

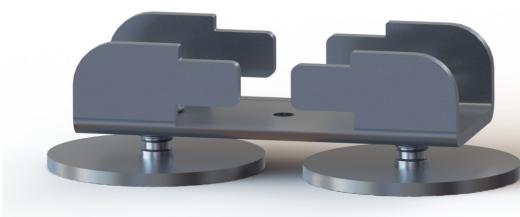
Engineered in the UK by Mextru



Technical Data

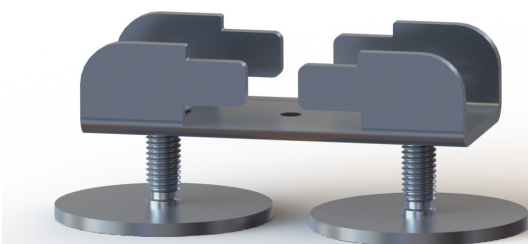
Weight	95 grams
Material	Aluminium 5251 H22
Minimum height	8mm from floor to underside of joist
Adjustment range	PED20—12mm PED20XR—22mm PED50— 35mm
Rated load capacity	500kg
Fire classification	A1 (all aluminium construction)

Ordering information



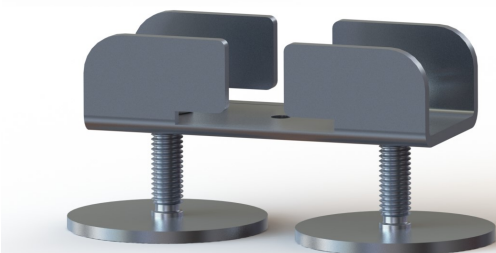
PED20—Specifically designed to work with the Mextru 20mm joist. The PED20 has a minimum height to the underside of the joist of 8mm, with an adjustment range of 12mm

[Order using code—PED20](#)



PED20XR—Designed to work with the Mextru 20mm joist, but with an extended working range. The PED20XR has a minimum height to the underside of the joist of 18mm, with an adjustment range of 22mm

[Order using code—PED20XR](#)



PED50—Designed to work with the Mextru 50,70, 100 and 120mm joists. The PED50 has a minimum height to the underside of the joist of 8mm, with an adjustment range of 35mm

[Order using code—PED50](#)

Engineered in the UK by Mextru

www.mextru.com sales@mextru.com

